



TÉCNICO
LISBOA

A School for the
21st Century

José Santos-Victor
VP International Affairs
santos.victor@ist.utl.pt





TÉCNICO LISBOA



INSTITUTO SUPERIOR TÉCNICO was established with the objective of providing the country with Engineers with know-how and the necessary skills to succeed in their professional lives, while simultaneously contributing to the economic development of Portugal.

Alfredo Bensaúde

First Director of IST, 1911



Campus Alameda

Located in one of the central-most parts of Lisbon, the Alameda Campus benefits from a transport network that facilitates mobility to all the areas of the city. In its vicinity, there are many shopping, leisure, culture, entertaining and sports areas.

Total area: 107 137 m²



Lisbon



Oeiras

Campus TagusPark

Integrated into the Science and Technology Park, known as Taguspark, one of the biggest and most important technological parks across the country, mainly in the area of ICT.

Total area: 17 186 m²

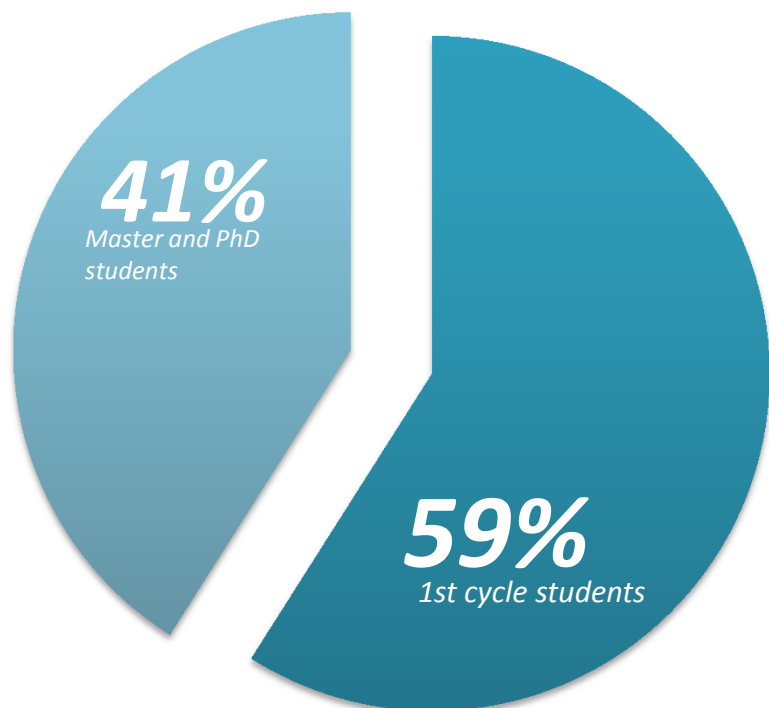
Campus Loures

One of the most important technology parks in the country, mainly in the area of Nuclear Science. Incorporates the Portuguese Research Reactor and the Radiological Protection and Safety Unit.



Loures

Facts & Figures



Students	10894
1st cycle students	59%
Masters and PhD students	41%
International Master students	13%
International PhD students	19%
Faculty & Researchers	~1,000
Staff	~700



Prime Ministers



António Guterres
Prime Minister of Portugal (1995-2002),
UN High-Commissioner for the Refugees.



Maria de Lurdes Pintassilgo
Prime Minister of Portugal (1979-80)

A. Nobre da Costa
Prime Minister of Portugal (1978)
Minister for Industry & Technology (1975-76)



Duarte Pacheco
Mayor of Lisbon (1938)
Minister for Public Instruction (1928)
Public Works and Communications (1932-36, 1938-43)
President of IST (1927-28, 1936-38)



Ministers for Education



Luis Veiga da Cunha
Minister for Education, (1979-80)



Fraústo da Silva
Minister for Education (1982-83)



Roberto Carneiro
Minister for Education (1987-91)



Diamantino Durão
Minister for Education (1991-92),
President of IST (1984-91, 1993-2000)



António Couto dos Santos
Minister for Youth (1987-91)
Parliamentary Affairs (1991-92)
Minister for Education (1993-95)



Eduardo Marçal Grilo
Minister for Education (1995-99)
Administrator, Gulbenkian Foundation



Ministers for Science & Technology

Maria Graça Carvalho

Minister for Science and Education, (2004)
Principal Adviser EC President Barroso



José Mariano Gago

Minister for Science & Technology (1995-2002)
Minister for Science, Technology & Higher Education (2005-09, 2009-11)

Eduardo Pereira

Minister for Housing, Urban Planning & Construction (1976), Minister Internal Affairs (1983)



Bayão Horta

Defense Minister (1982)
Minister of Industry, Energy and Exports (1981,1982)



Luís Mira Amaral

Minister for Industry and Energy (1985-87), Minister of Labour & Social Security (1987-1995)



Ministers for Industry & Energy

Ministers for other areas

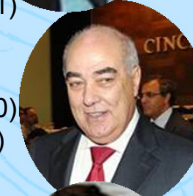
Fernando Faria de Oliveira

Minister for Commerce and Tourism (1990-91)



J. Ferreira do Amaral

Minister for Commerce and Tourism (1985-90)
Public Works and Communications (1990-95)



Mário Lino Correia

Minister for Public Works, Transports and Communications (2005-2009)



Nunes Correia

Minister for the Environment, Territory and Regional Development (2005-2009).



Maria Graça Carvalho

Member EU Parliament (2009-)



European Governance

João Caraça

Member of the Board of the EIT





Outstanding Alumni
in the Corporate World

Fernando Faria de Oliveira
Chairman Caixa Geral de Depósitos

António Costa Silva
CEO Partex Oil & Gas

Rogério Carapuça
Chairman, NOVABASE

António Vidigal
CEO EDP Inovação

Joaquim Sérvulo Rodrigues
CEO ES Ventures

José Epifanio da Franca
CEO Chipidea



António Câmara
CEO Ydreams

Luis Pardal
CEO REFER

M Payes do Amaral
Founder Media Capital
Chairman TVI

F. Cardoso dos Reis
CEO Metropolitano

Cláudia Goya
CEO Microsoft Portugal





2

Education



Graduate programmes

Alameda Campus

3+2 yrs or M.Sc (2yr)

- Bioengineering and Nanosystems
- Biotechnology
- Chemistry
- Complex Transport Infrastructure Systems (w/ MIT)
- Computer Science and Engineering
- Construction and Rehabilitation
- Information Systems and Computer Engineering
- Materials Engineering
- Mathematics and Applications
- Mining and Geological Engineering
- Naval Architecture and Marine Engineering
- Pharmaceutical Engineering
- Structural Engineering
- Territorial Engineering
- Transport Infrastructure Engineering
- Transport Planning and Operation
- Urban Studies and Territorial Management

5 yrs (Integrated Master)

- Aerospace Engineering
- Architecture
- Biological Engineering
- Biomedical Engineering
- Biomedical Technologies
- Chemical Engineering
- Civil Engineering
- Electrical and Computer Engineering
- Engineering and Water Management
- Environmental Engineering
- Mechanical Engineering
- Petroleum Engineering
- Technological Physics Engineering

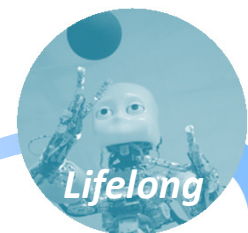
Taguspark Campus

3+2 yrs or M.Sc (2yr)

- Communication Networks Engineering
- Electronics Engineering
- Engineering and Industrial Management
- Information Systems and Computer Engineering



Graduate



Lifelong

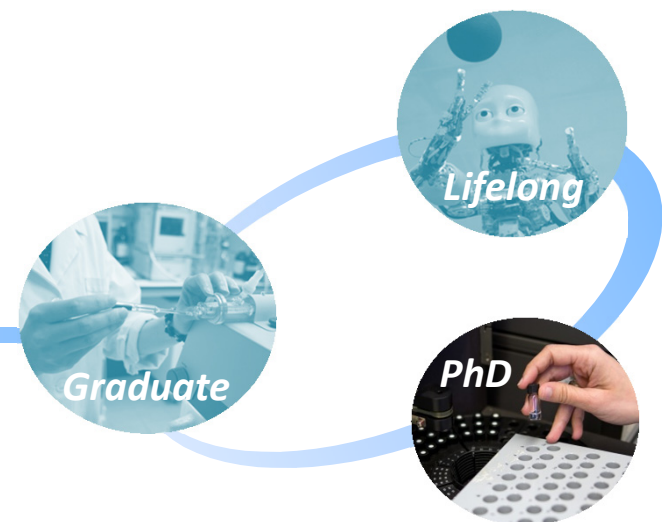


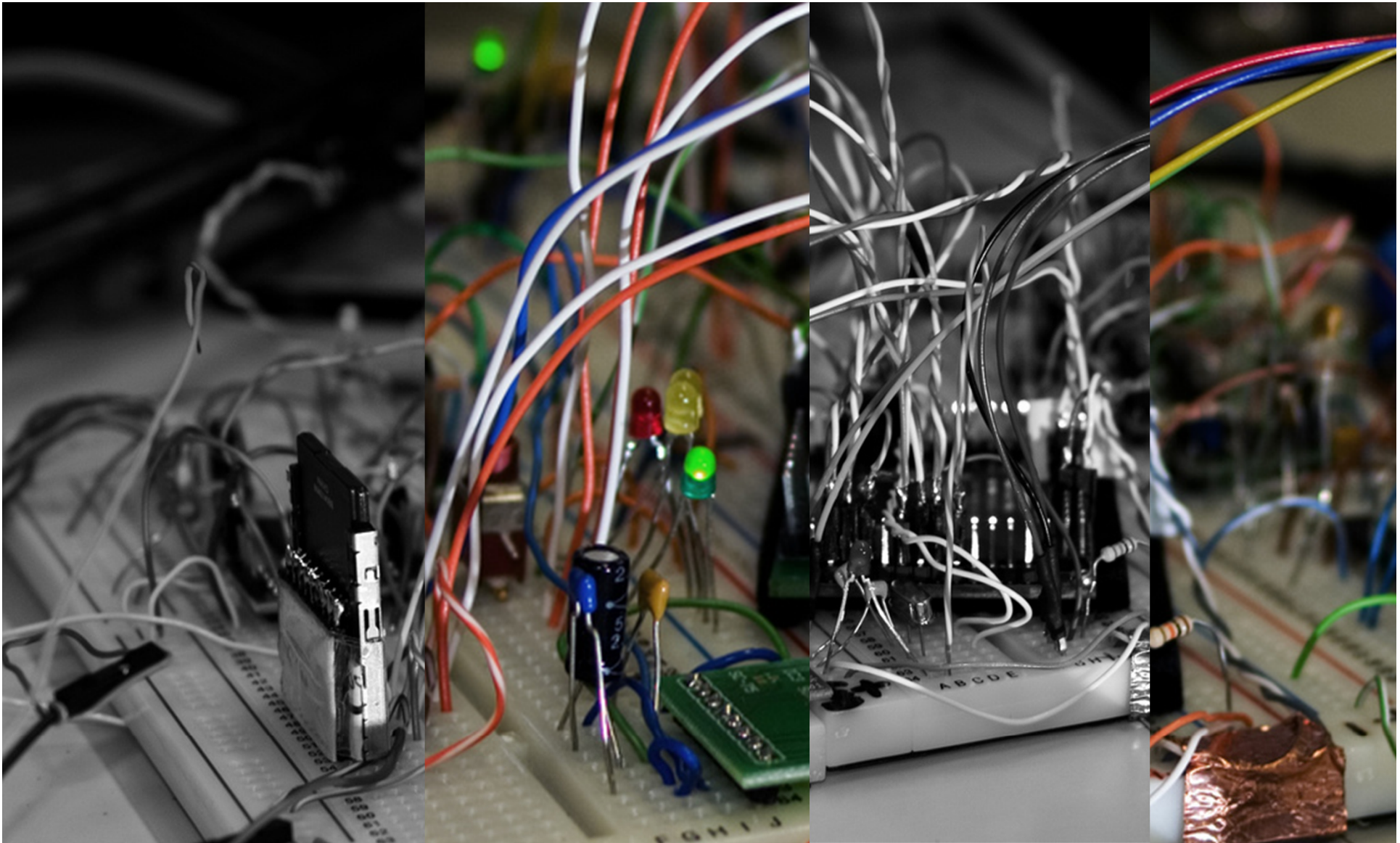
PhD

- Aerospace Engineering
- Architecture *
- Bioengineering ♦ *
- Biomedical Engineering
- Biotechnology
- Chemical Engineering
- Chemistry
- Civil Engineering *
- Climate Changes and Sustainable Development Policy
- Computational Engineering
- Computer Science and Engineering *
- Electrical and Computer Engineering ♦♦ *
- Engineering and Management
- Engineering and Public Policy ♦♦
- Environmental Engineering
- Geo-Resources
- Information Security
- Information Systems and Computer Engineering

- Leaders for the Technical Industries
- Materials Engineering
- Mathematics ♦♦ * ♦
- Mechanical Engineering ♦
- Naval Architecture and Marine Engineering
- Physics *
- Refining, Petrochemical and Chemical Engineering
- River Restoration and Management
- Statistics and Stochastic Processes
- Sustainable Energy Systems ♦
- Technological Change and Entrepreneurship ♦♦
- Technological Physics Engineering
- Territorial Engineering
- Transportation ♦

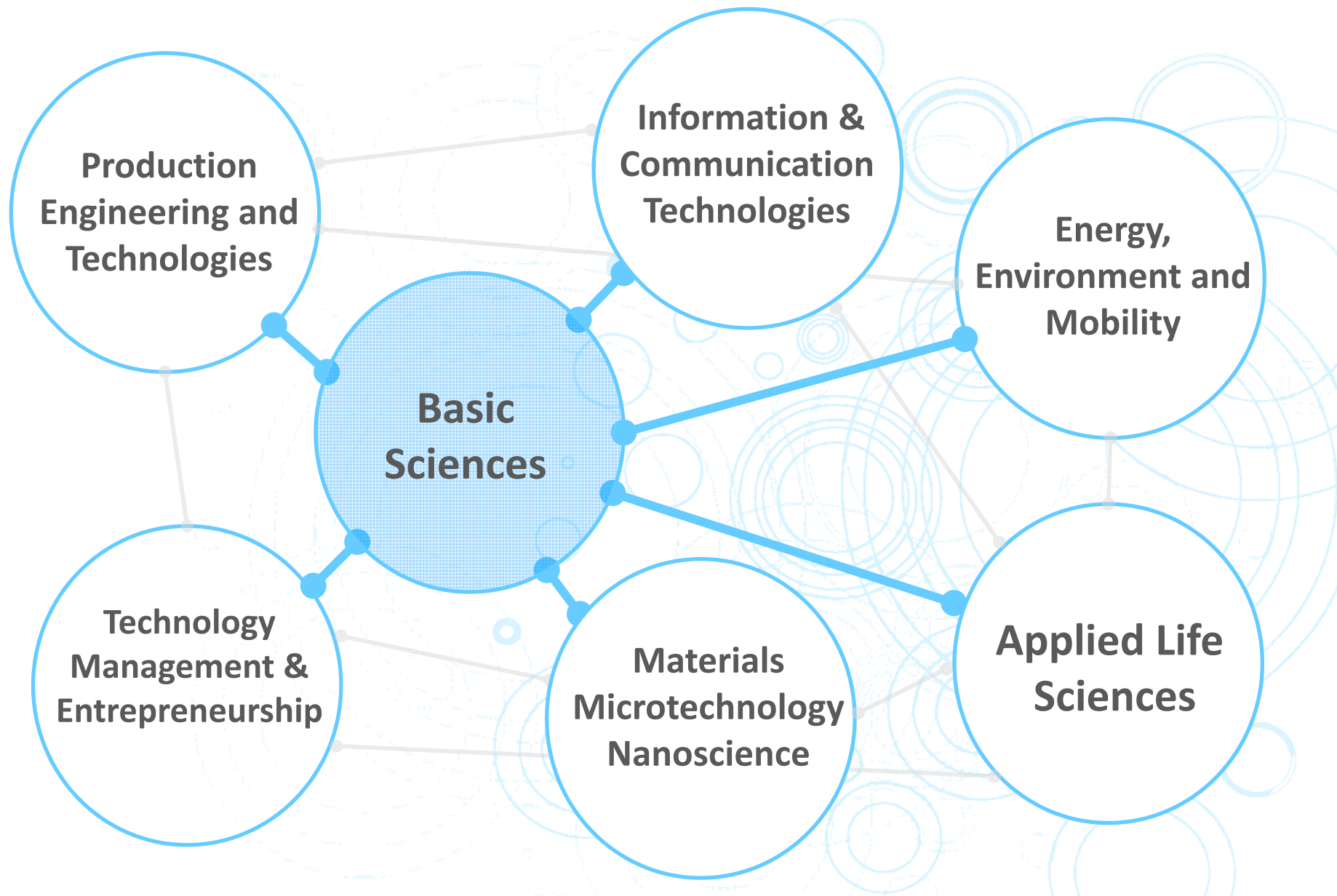
- ♦ with Massachusetts Institute of Technology - MIT
- ♦♦ with Carnegie Mellon University - CMU
- ♦ with University Texas – Austin – UTA
- * with Ecole Polytech. Fédérale de Lausanne - EPFL





3

Research & Development



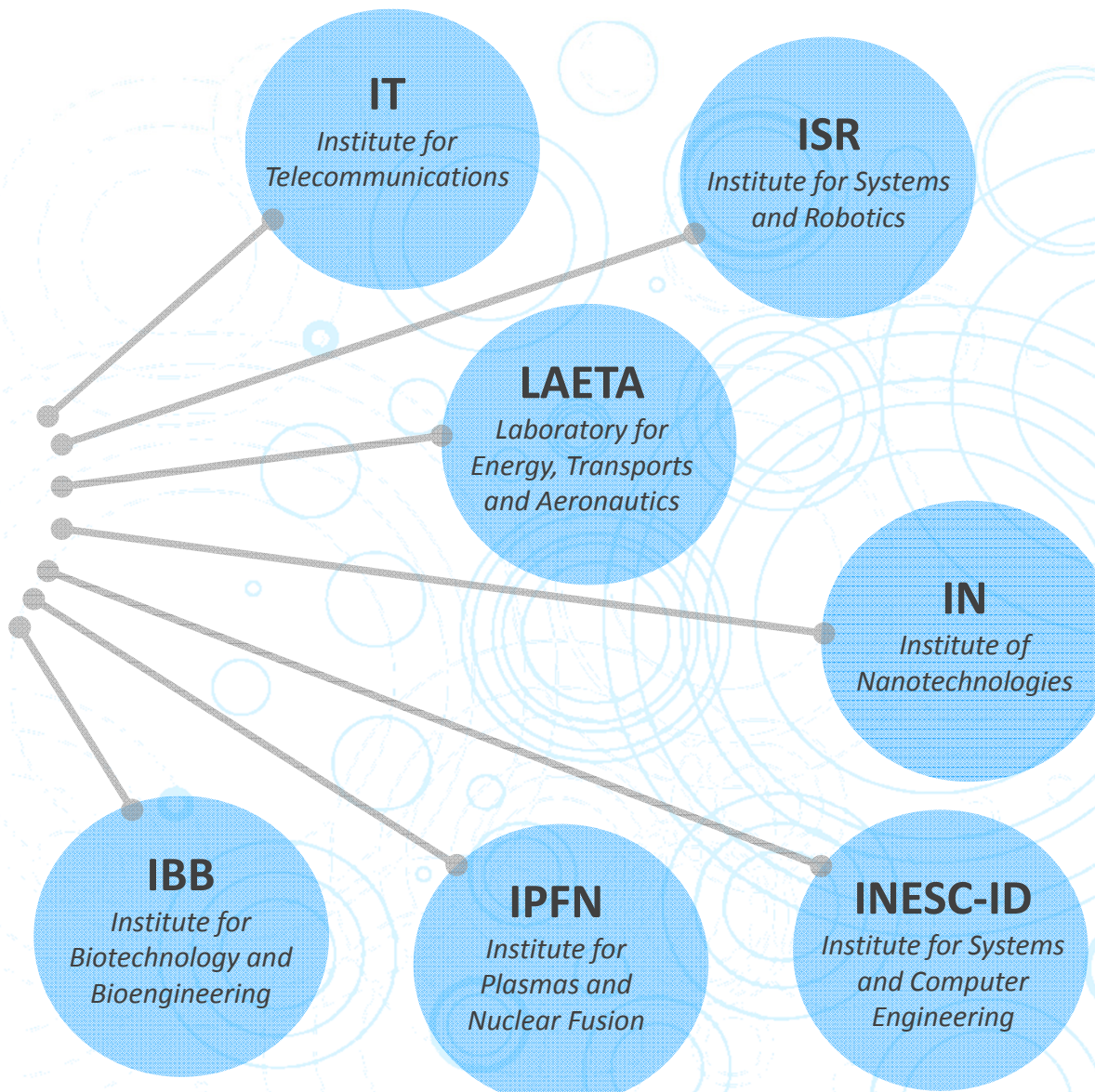


TÉCNICO LISBOA

Associate Laboratories



TÉCNICO LISBOA





TÉCNICO LISBOA

ist spin-off



SISCOG
SISTEMAS COGNITIVOS



Terraprima®



Inovação e engenharia em biotecnologia



Informática com Valor



MODELAÇÃO EM ENGENHARIA, LDA



EMPOWERING ePLATFORMS



Performance upgraded



Engenharia e Consultadoria, S.A.



a Vida nas suas mãos



ENGENHARIA & SOFTWARE





5

Internationalisation



Participation in Academic Networks



CLUSTER - Consortium Linking Universities of Science and Technology for Education and Research



TIME - Top Industrial Managers for Europe



CESAER - Conference of European Schools for Advanced Engineering Education and Research



CINDA - Centro Interuniversitario de Desarrollo



SEFI - European Society for Engineering Education



TÉCNICO LISBOA



Premier Partnerships



Technische Universiteit Eindhoven University of Technology



TÉCNICO LISBOA



Karlsruhe Institute of Technology



ROYAL INSTITUTE OF TECHNOLOGY



Aalto University



ÉCOLE POLYTECHNIQUE FÉDÉRALE DE LAUSANNE



Grenoble INP



UCL
Université catholique de Louvain



UNIVERSITAT POLITÈCNICA DE CATALUNYA BARCELONATECH



TRINITY COLLEGE DUBLIN
COLÁISTE NA TRÍÓNÓIDE, BAILE ÁTHA CLIATH



TECHNISCHE UNIVERSITÄT DARMSTADT

Associate Members



Georgia Institute of Technology



Poli-USP



Technion
Israel Institute of Technology



清华大学
Tsinghua University



ÉCOLE POLYTECHNIQUE MONTRÉAL



ТОМСКИЙ ПОЛИТЕХНИЧЕСКИЙ УНИВЕРСИТЕТ
TOMSK POLYTECHNIC UNIVERSITY



Joint Degrees*

MIT

(Massachusetts Institute of Technology)

CMU

(Carnegie Mellon University)

UT/Austin

(University of Texas at Austin)

EPFL

(Ecole Polytechnique Federale de Lausanne)

TIME

Politecnico di Milano; Università Padova; Università Trento; Moscow; Écoles Centrales Paris, Lille, Lyon, Nantes.

CLUSTER

KTH (Sweden), UPC (Spain), AALTO (Finland)

and MORE

Universidade de São Paulo, TUDelf, SupAero, UFRJ, UniCAMP,

**Joint*: understood as joint, dual, double or in collaboration.*



Cooperation with Chinese Universities

University of Macao, Macao SAR

Beijing Institute of Technology

Tsinghua University

Zhejiang University

Tongji University

Dalian University

Harbin University

Chinese University of HK, HK SAR

Beijing Jiaotong University

**Student
Exchange**

**Research
Internships**

**Staff
Exchange**

**Master
Thesis**

**Joint
Doctorates**



Cooperation with Angola, Mozambique and Cape Verde

- Long-lasting collaboration with several projects
- Re- structuring of Engineering Programmes Agostinho Neto (UAN).
- Internships and training for technicians from UAN at IST
- Training of professionals working for companies in Angola (cooperation with TOTAL-Angola, Ministries for Fisheries and Telecom in Angola).
- Cooperation efforts starting with ISPTEC and ISUTIC

- Master programmes in Mozambique (UEM, ISUTC)
- PhD and M.Sc in Oil and Gas, Hydraulics and hydric resources, Transports, Telecommunications
- Technical books in Portuguese language (IST-Press)

- Support to the development of Univ. de Cabo Verde (UNICV) with two Master programmes in the areas of energy and mechanical engineering.
- Support to the Ministry of Higher Education in Cabo Verde (projecto IPAD).



Outlook

FUTURE: Premier partnerships with IST

- Advanced training (MSc/PhD)
- Professional training
- Distance learning and e-Labs
- Joint development of R&D Projects
- Development of specific training programmes (e.g. Oil and Gas)
- Contacts with multinational companies operating in Angola and Mozambique (networking)
- Entrepreneurship and development of startups



TÉCNICO LISBOA

eit Knowledge & Innovation Community
KIC InnoEnergy

KIC InnoEnergy Boosting innovation for sustainable energy



ERASMUS MUNDUS

Joint Programmes

Systems Biology
(euSYSBIO)

Distributed Computing
(EMDC)

Functional Materials
(IDS-FunMat)

Distributed Computing
(JDDC)

Plasma Physics
(Fusion DC)

Sustainable Energy
(SELECT+)

Computational Mechanics
(SEED)

Partnerships for Student Mobility

WELCOME

(Egypt, Lebanon)

ARCO-IRIS

(Argentina)

HERITAGE

(India)

ANGLE

(Africa, Caribbean, Pacific)

EUROEAST

(Eastern Europe)

External Cooperation & Promotion of European HE

EUBrazil Start!up
(Brazil)

ADDE SALEM
(Argentina, Brazil, Chile,
Colombia)

MASTER

DOCTORATE



TÉCNICO LISBOA

... Diversity!





6

The IST Experience



TÉCNICO LISBOA

Welcome to Lisbon



Beaches





This is...



TÉCNICO
LISBOA